

VM

Volantino a 6 lobi Six-lobe knob / Volante de seis lóbulos



Descrizione

Bussola in ottone sporgente e foro cieco filettato.

Outcropping brass insert with tapped blind hole.

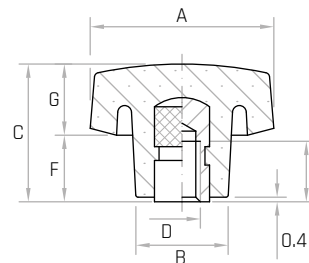
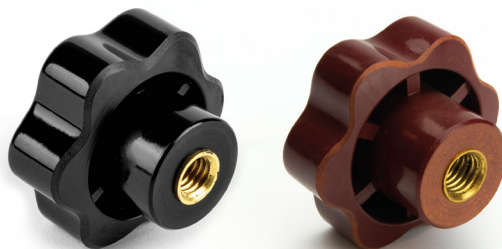
Inserto saliente de latón y agujero ciego roscado.

Materiale

Duroplasto nero.

Black phenolic plastic.

Duroplástico negro.



Codice	Modello	A mm	B mm	C mm	D	E mm	F mm	G mm	Colore	Peso gr.
6115005	VM/20 M6	20	13	16	M6	9	8	8	●	5
6115010	VM/20 M6	20	13	16	M6	9	8	8	●	5
6115015	VM/40 M8	40	21	28	M8	15	13	15	●	30
6115020	VM/40 M8	40	21	28	M8	15	13	15	●	30
6115025	VM/40 M10	40	21	28	M10	16	13	15	●	31
6115030	VM/40 M10	40	21	28	M10	16	13	15	●	31
6115035	VM/50 M10	50	25	32	M10	16	15	17	●	49
6115040	VM/50 M10	50	25	32	M10	16	15	17	●	49
6115045	VM/50 M12	50	25	32	M12	18	15	17	●	50
6115050	VM/50 M12	50	25	32	M12	18	15	17	●	50

NOTE: Si forniscono, per quantità adeguate, con inserti a misura in acciaio, in ottone, in acciaio inox.

For certain minimum quantities, tapped metal inserts available in brass, zinc plated steel or stainless steel upon request.

Por cantidad apropiada, disponible también con insertos de distintas medidas.