

# BM

## Morsettiera Terminal Block / Regleta

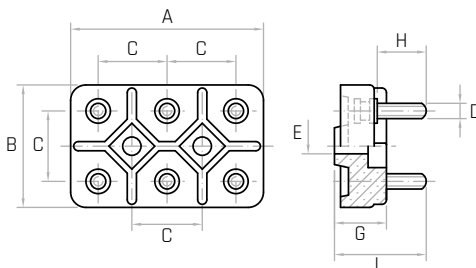
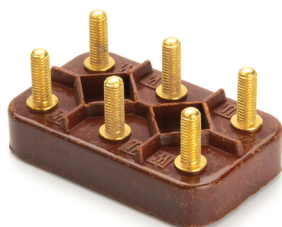


### Descrizione

**Morsetti in ottone a base tonda.**  
Round based brass terminals.  
Bornes de latón de base redonda.

### Materiale

**Resina fenolica con carica minerale, colore fibra. Alto potere dielettrico. Classe di isolamento E.**  
Brown mineral filled phenolic plastic. Insulation class E.  
Resina fenólica con carga mineral color fibra. Clase de aislamiento E.



Codice	Modello	A mm	B mm	C mm	G mm	L mm	D	H mm	E mm
6210005	<b>BM/4</b>	54	34	20	15	25	<b>M4</b>	12	6,3
6211005	<b>BM/5</b>	64	40	23	16	30	<b>M5</b>	15	7

**NOTE:** Tipo unificato, tabella DIN 46294.  
Unified type, chart DIN 46294.  
Tipo unificado tabla DIN 46294.

# BM Accessori

## BM Accessories Auxiliares BM



### Descrizione

**Per morsettiera modello BM.**  
For BM terminal blocks.  
Para regletas modelo BM.

### Materiale

**Ottone.**  
Brass.  
Latón.

Codice	Modello	A mm	B mm	S mm	H mm
<b>BM/4</b>					
6214025	<b>Rondelle - Washers - Arandelas</b>	<b>Ø4,2</b>	8	0,5	-
6214015	<b>Ponti - Jumpers - Puentes</b>	<b>Ø4,8</b>	9	0,5	20
6214020	<b>Dadi - Nuts - Tuercas</b> <b>DIN 439</b>	<b>M4</b>	7	2,3	-
<b>BM/5</b>					
6216025	<b>Rondelle - Washers - Arandelas</b>	<b>Ø5,5</b>	11	0,5	-
6211015	<b>Ponti - Jumpers - Puentes</b>	<b>Ø5,8</b>	11	0,8	23
6216020	<b>Dadi - Nuts - Tuercas</b> <b>DIN 439</b>	<b>M5</b>	8	2,7	-

**NOTE:** Ogni morsettiera comprende: 6 rondelle - 3 ponti - 12 dadi.  
Each terminal includes: 6 washers - 3 jumpers - 12 nuts.  
Cada regleta incluye: 6 arandelas - 3 puentes - 12 tuercas.

