



## Accessori elettrici

Electrical accessories

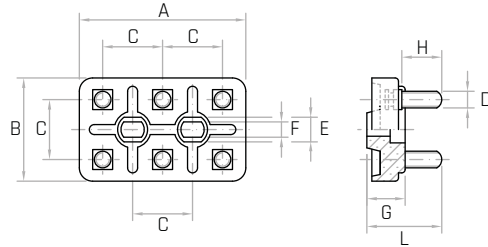
Accesorios electricos

### Descrizione

**Morsetti in ottone a base quadra.**  
Square based brass terminals.  
Bornes de latón de base cuadrada.

### Materiale

**Aminoplastico speciale grigio. Approvato da U.L. Americana. Alto potere dielettrico. Resistente alle correnti striscianti. Classe di isolamento E.**  
Grey melamine plastic, U.L. certified. Electrical insulation class E.  
Aminoplástico especial gris. Aprobado por U.L. americana.  
Clase de aislamiento E.



| Codice  | Modello      | A mm | B mm | C mm | G mm | L mm | D         | H mm | F mm | E mm |
|---------|--------------|------|------|------|------|------|-----------|------|------|------|
| 6216005 | <b>BAM/5</b> | 56   | 36   | 20   | 13   | 29   | <b>M5</b> | 15   | 5,5  | 10   |
| 6217005 | <b>BAM/6</b> | 70   | 45   | 25   | 16,5 | 32   | <b>M6</b> | 17   | 6,5  | 11   |
| 6218005 | <b>BAM/8</b> | 96   | 61   | 35   | 20   | 40   | <b>M8</b> | 22   | 9    | 13,5 |

**NOTE:** A richiesta vengono prodotte anche in duroplasto nero, rinforzato con fibre di vetro. Classe di isolamento H.  
For certain minimum quantities, available in black fiber reinforced phenolic plastic upon request. Electrical insulation class H.  
Por cantidad apropiada se producen también de duroplástico negro reforzado con fibra de vidrio. Clase de aislamiento H.

# BAM Accessori

## BAM Accessories Auxiliares BAM

### Descrizione

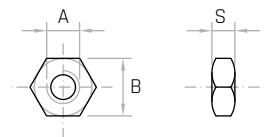
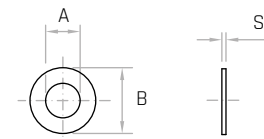
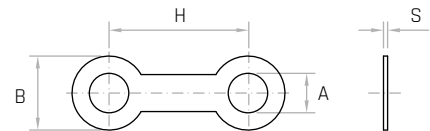
**Per morsettiere modello BAM.**  
For BAM terminal blocks.  
Para regletas modelo BAM.

### Materiale

**Ottone.**  
Brass.  
Latón.

| Codice       | Modello                                     | A mm        | B mm | S mm | H mm |
|--------------|---|-------------|------|------|------|
| <b>BAM/5</b> |   |             |      |      |      |
| 6216025      | <b>Rondelle - Washers - Arandelas</b>       | <b>Ø5,5</b> | 11   | 0,5  | -    |
| 6216015      | <b>Ponti - Jumpers - Puentes</b>            | <b>Ø5,5</b> | 10   | 0,5  | 20   |
| 6216020      | <b>Dadi - Nuts - Tuercas</b> <b>DIN 439</b> | <b>M5</b>   | 8    | 2,7  | -    |
| <b>BAM/6</b> |   |             |      |      |      |
| 6217025      | <b>Rondelle - Washers - Arandelas</b>       | <b>Ø6,2</b> | 13   | 0,5  | -    |
| 6217015      | <b>Ponti - Jumpers - Puentes</b>            | <b>Ø6,5</b> | 12   | 1    | 25   |
| 6217020      | <b>Dadi - Nuts - Tuercas</b> <b>DIN 439</b> | <b>M6</b>   | 10   | 3,2  | -    |
| <b>BAM/8</b> |   |             |      |      |      |
| 6218025      | <b>Rondelle - Washers - Arandelas</b>       | <b>Ø8,2</b> | 16   | 0,8  | -    |
| 6218015      | <b>Ponti - Jumpers - Puentes</b>            | <b>Ø8,2</b> | 15   | 1,5  | 5    |
| 6218020      | <b>Dadi - Nuts - Tuercas</b> <b>DIN 439</b> | <b>M8</b>   | 13   | 4    | -    |

**NOTE:** Ogni morsettiera comprende: 6 rondelle - 3 ponti - 12 dadi.  
Each terminal includes: 6 washers - 3 jumpers - 12 nuts.  
Cada regleta incluye: 6 arandelas - 3 puentes - 12 tuercas.



# BAM/T

Morsettiera  
Terminal Block / Regleta

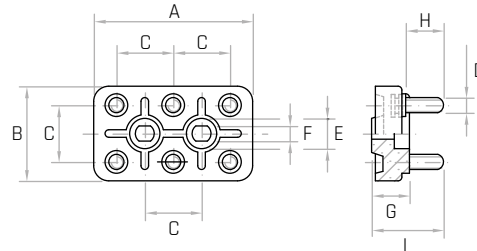


## Descrizione

**Morsetti in ottone a base tonda.**  
Round based brass terminals.  
Bornes de latón de base redonda.

## Materiale

**Approvato da U.L. Americana. Aminoplastico speciale grigio. Alto potere dielettrico. Resistente alle correnti striscianti. Classe di isolamento E.**  
Grey melamine plastic. U.L. certificated. Electrical insulation class E.  
Aminoplástico especial gris. Aprobado por U.L. americana.  
Clase de aislamiento E.



| Codice  | Modello        | A mm | B mm | C mm | G mm | L mm | D         | H mm | F mm | E mm |
|---------|----------------|------|------|------|------|------|-----------|------|------|------|
| 8100132 | <b>BAM/3/T</b> | 40   | 25   | 15   | 12   | 23   | <b>M4</b> | 12   | 4,5  | 9    |
| 8100909 | <b>BAM/4/T</b> | 50   | 32   | 18   | 12   | 23   | <b>M4</b> | 12   | 4,5  | 9    |

**NOTE:** A richiesta vengono prodotte anche in duroplasto nero, rinforzato con fibre di vetro. Classe di isolamento H.  
For certain minimum quantities, available in black fiber reinforced phenolic plastic upon request. Electrical insulation class H.  
Por cantidad apropiada se producen también de duroplástico negro reforzado con fibra de vidrio. Clase de aislamiento H.

# BAM/T Accessori

BAM/T Accessories  
Auxiliares BAM/T



## Descrizione

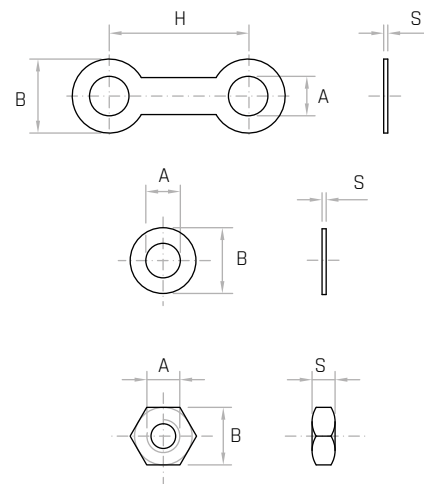
**Per morsettiera modello BAM/T.**  
For BAM/T terminal blocks.  
Para regletas modelo BAM/T.

## Materiale

**Ottone.**  
Brass.  
Latón.

| Codice         | Modello                               | A mm              | B mm | S mm | H mm |
|----------------|---------------------------------------|-------------------|------|------|------|
| <b>BAM/3/T</b> |                                       |                   |      |      |      |
| 6214025        | <b>Rondelle - Washers - Arandelas</b> | <b>Ø4,2</b>       | 8    | 0,5  | -    |
| 8800039        | <b>Ponti - Jumpers - Puentes</b>      | <b>Ø4,5</b>       | 8    | 0,5  | 15   |
| 6214020        | <b>Dadi - Nuts - Tuercas</b>          | <b>DIN 439 M4</b> | 7    | 2,3  | -    |
| <b>BAM/4/T</b> |                                       |                   |      |      |      |
| 6214025        | <b>Rondelle - Washers - Arandelas</b> | <b>Ø4,2</b>       | 8    | 0,5  | -    |
| 6214015        | <b>Ponti - Jumpers - Puentes</b>      | <b>Ø4,5</b>       | 9    | 0,5  | 18   |
| 6214020        | <b>Dadi - Nuts - Tuercas</b>          | <b>DIN 439 M4</b> | 7    | 2,3  | -    |

**NOTE:** Ogni morsettiera comprende: 6 rondelle - 3 ponti - 12 dadi.  
Each terminal includes: 6 washers - 3 jumpers - 12 nuts.  
Cada regleta incluye: 6 arandelas - 3 puentes - 12 tuercas.



# BM

## Morsettiera Terminal Block / Regleta

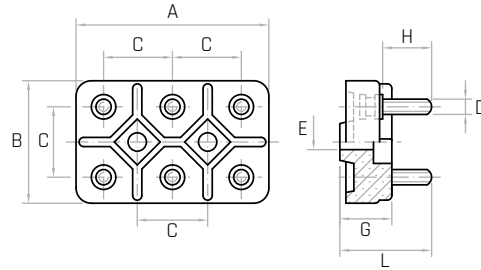


### Descrizione

**Morsetti in ottone a base tonda.**  
Round based brass terminals.  
Bornes de latón de base rodonda.

### Materiale

**Resina fenolica con carica minerale, colore fibra. Alto potere dielettrico. Classe di isolamento E.**  
Brown mineral filled phenolic plastic. Insulation class E.  
Resina fenólica con carga mineral color fibra. Clase de aislamiento E.



| Codice  | Modello | A mm | B mm | C mm | G mm | L mm | D  | H mm | E mm |
|---------|---------|------|------|------|------|------|----|------|------|
| 6210005 | BM/4    | 54   | 34   | 20   | 15   | 25   | M4 | 12   | 6,3  |

**NOTE:** Tipo unificato, tabella DIN 46294.  
Unified type, chart DIN 46294.  
Tipo unificado tabla DIN 46294.

# BM Accessori

## BM Accessories Auxiliares BM



### Descrizione

**Per morsettiera modello BM.**  
For BM terminal blocks.  
Para regletas modelo BM.

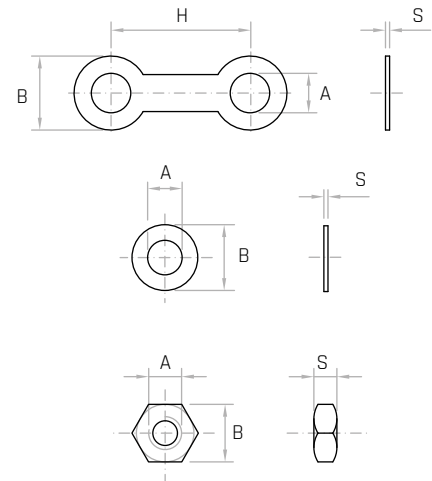
### Materiale

**Ottone.**  
Brass.  
Latón.

| Codice      | Modello                        | A mm    | B mm | S mm | H mm |
|-------------|--------------------------------|---------|------|------|------|
| <b>BM/4</b> |                                |         |      |      |      |
| 6214025     | Rondelle - Washers - Arandelas | Ø4,2    | 8    | 0,5  | -    |
| 6214015     | Ponti - Jumpers - Puentes      | Ø4,8    | 9    | 0,5  | 20   |
| 6214020     | Dadi - Nuts - Tuercas          | DIN 439 | M4   | 7    | 2,3  |



**NOTE:** Ogni morsettiera comprende: 6 rondelle - 3 ponti - 12 dadi.  
Each terminal includes: 6 washers - 3 jumpers - 12 nuts.  
Cada regleta incluye: 6 arandelas - 3 puentes - 12 tuercas.



# RO

Coppia rondelle  
Washers / Arandelas

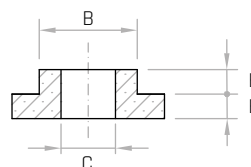
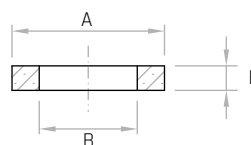


### Materiale

**Tecnopolimero nero, rinforzato con fibre di vetro.**

Black thermoplastic, glass fiber reinforced.

Termoplástico negro, reforzado con fibra de vidrio.



| Codice  | Modello           | A mm | B mm | C mm         | E mm |
|---------|-------------------|------|------|--------------|------|
| 6318005 | <b>RO/1 Ø8</b>    | 28   | 18   | <b>Ø8</b>    | 4,5  |
| 6318010 | <b>RO/1 Ø10</b>   | 28   | 18   | <b>Ø10</b>   | 4,5  |
| 6318015 | <b>RO/2 Ø12,5</b> | 35   | 18   | <b>Ø12,5</b> | 4,5  |

# RO

Coppia rondelle  
Washers / Arandelas

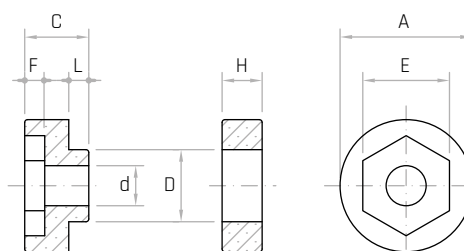


### Materiale

**Duroplasto nero o rosso.**

Black or red phenolic plastic.

Duroplástico negro o rojo.



| Codice  | Modello          | A mm | d mm        | E mm | D mm  | H mm | F mm | L mm | C mm | Colore |
|---------|------------------|------|-------------|------|-------|------|------|------|------|--------|
| 6219004 | <b>RO/3 Ø6,5</b> | 20   | <b>Ø6,5</b> | 10,5 | Ø10,5 | 5    | 3    | 4    | 12,5 | ●      |
| 6219005 | <b>RO/3 Ø6,5</b> | 20   | <b>Ø6,5</b> | 10,5 | Ø10,5 | 5    | 3    | 4    | 12,5 | ●      |
| 6219009 | <b>RO/4 Ø8</b>   | 32   | <b>Ø8</b>   | 14,5 | Ø18   | 11   | 3    | 5    | 16   | ●      |
| 6219010 | <b>RO/4 Ø8</b>   | 32   | <b>Ø8</b>   | 14,5 | Ø18   | 11   | 3    | 5    | 16   | ●      |
| 6219015 | <b>RO/4 Ø10</b>  | 32   | <b>Ø10</b>  | 17,5 | Ø18   | 11   | 3    | 5    | 16   | ●      |
| 6219020 | <b>RO/4 Ø12</b>  | 32   | <b>Ø12</b>  | 19,5 | Ø18   | 11   | 3    | 5    | 16   | ●      |

# M/43

Morsetto serrafilo  
Cable clamp / Abrazadera de cables

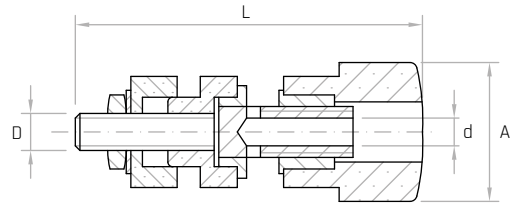


## Descrizione

**Corpo in ottone nichelato.**  
Nickel plated brass body.  
Cuerpo de latón niquelado.

## Materiale

**Tecnopolimero nero o rosso, rinforzato con fibre di vetro.**  
Black or red thermoplastic, glass fiber reinforced.  
Termoplástico negro o rojo, reforzado con fibra de vidrio.



| Codice  | Modello | A mm | L mm | d mm | D  | Colore |
|---------|---------|------|------|------|----|--------|
| 6319005 | M/43    | 15   | 43   | Ø4   | M4 | ●      |
| 6319010 | M/43    | 15   | 43   | Ø4   | M4 | ●      |

# M/59

Morsetto serrafilo  
Cable clamp / Abrazadera de cables

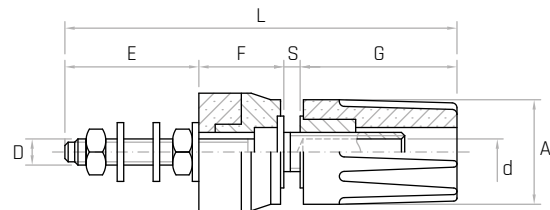


## Descrizione

**Corpo in ottone nichelato.**  
Nickel plated brass body.  
Cuerpo de latón niquelado.

## Materiale

**Tecnopolimero nero o rosso, rinforzato con fibre di vetro.**  
Black or red thermoplastic, glass fiber reinforced.  
Termoplástico negro o rojo, reforzado con fibra de vidrio.



| Codice  | Modello | A mm | d mm | D  | E mm | F mm | S mm | G mm | L mm | Colore |
|---------|---------|------|------|----|------|------|------|------|------|--------|
| 6319015 | M/59    | 16   | Ø4   | M4 | 19   | 13   | 2,5  | 24,5 | 59   | ●      |
| 6319020 | M/59    | 16   | Ø4   | M4 | 19   | 13   | 2,5  | 24,5 | 59   | ●      |

## Descrizione

### Corpo in acciaio zincato.

Zinc plated steel body.

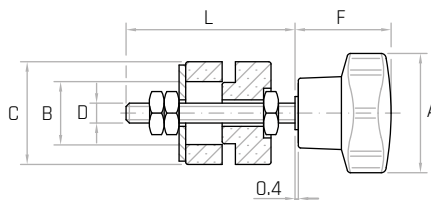
Cuerpo de acero galvanizado.

## Materiale

### Duroplasto nero o rosso.

Black or red phenolic plastic.

Duroplástico negro o rojo.



| Codice  | Modello | A mm | B mm | C mm | D   | F mm | L mm | Colore |
|---------|---------|------|------|------|-----|------|------|--------|
| 6220005 | VMS/20  | 20   | 11   | 20   | M6  | 16   | 47   | ●      |
| 6220010 | VMS/20  | 20   | 11   | 20   | M6  | 16   | 47   | ●      |
| 6220015 | VMS/40  | 40   | 18   | 32   | M8  | 28   | 50   | ●      |
| 6220020 | VMS/40  | 40   | 18   | 32   | M8  | 28   | 50   | ●      |
| 6220025 | VMS/40  | 40   | 18   | 32   | M10 | 28   | 50   | ●      |
| 6220030 | VMS/40  | 40   | 18   | 32   | M10 | 28   | 50   | ●      |
| 6220035 | VMS/50  | 50   | 18   | 32   | M12 | 32   | 50   | ●      |
| 6220040 | VMS/50  | 50   | 18   | 32   | M12 | 32   | 50   | ●      |



## **Gamm Srl**

Via della Tecnica 21/23

35075 - Montecchio Maggiore (VI) - Italy

Tel. +39 0444 706311

[comm@gamm.com](mailto:comm@gamm.com)

[www.gamm.com](http://www.gamm.com)

