

# PRTB

**Piede regolabile**  
**Adjustable feet / Pie adjustable**



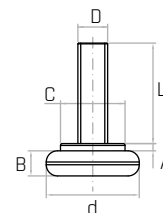
## Materiale

**Tecnopolimero nero, rinforzato con fibre di vetro, finitura opaca.**

Black thermoplastic, glass fiber reinforced, mat.

Termoplástico negro, reforzado con fibra de vidrio, acabado mate.

Codice	Modello	d mm	C mm	B mm	A mm	D	L mm	Peso gr.
7322223	<b>PRTB/25 M8x17</b>	25	18	6,7	2	<b>M8</b>	17	15
7322227	<b>PRTB/25 M8x22</b>	25	18	6,7	2	<b>M8</b>	22	17
7322230	<b>PRTB/25 M8x27</b>	25	18	6,7	2	<b>M8</b>	27	19
7322260	<b>PRTB/25 M10x27</b>	25	18	6,7	2	<b>M10</b>	27	27
7322290	<b>PRTB/30 M8x27</b>	30	18,8	7,8	2	<b>M8</b>	27	20
7322330	<b>PRTB/30 M10x27</b>	30	18,8	7,8	2	<b>M10</b>	27	27
7322363	<b>PRTB/40 M8x17</b>	40	20	8,5	2	<b>M8</b>	17	22
7322375	<b>PRTB/40 M8x32</b>	40	20	8,5	2	<b>M8</b>	32	28
7322407	<b>PRTB/40 M10x22</b>	40	20	8,5	2	<b>M10</b>	22	30
7322415	<b>PRTB/40 M10x32</b>	40	20	8,5	2	<b>M10</b>	32	36
7322465	<b>PRTB/50 M8x32</b>	50	22	10	2	<b>M8</b>	32	36
7322497	<b>PRTB/50 M10x22</b>	50	22	10	2	<b>M10</b>	22	29
7322505	<b>PRTB/50 M10x32</b>	50	22	10	2	<b>M10</b>	32	44
7322545	<b>PRTB/60 M8x32</b>	60	22	8,4	2,5	<b>M8</b>	32	46
7322588	<b>PRTB/60 M10x37</b>	60	22	8,4	2,5	<b>M10</b>	37	56
7322670	<b>PRTB/80 M10x37</b>	80	26	9,5	3	<b>M10</b>	37	65



**NOTE:** Si forniscono, per quantità adeguate, in colori diversi e con inserti a misura in acciaio, in ottone ed in acciaio inox.

For certain minimum quantities, custom colors and threaded metal studs available in brass, zinc plated steel or stainless steel upon request.

Por cantidad apropiada, disponible también en colores diferentes y con insertos de distintas medidas.