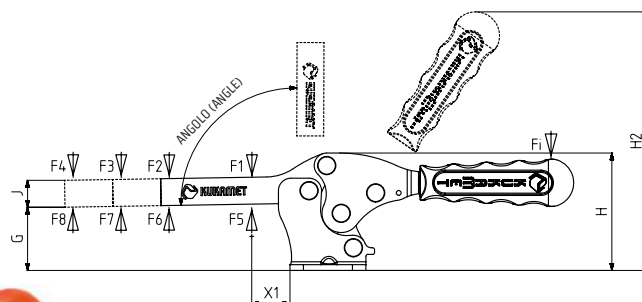


| MODELLO NR | NERO (NOIR) | F1 (N) | F2 (N) | F3 (N) | F4 (N) | F5 (N) | F6 (N) | F7 (N) | F8 (N) | Fi                           |                              | ANGOLO (ANGLE) (± 5°) | PESO (POIDS) (gr ±%) |      |      |
|------------|-------------|--------|--------|--------|--------|--------|--------|--------|--------|------------------------------|------------------------------|-----------------------|----------------------|------|------|
|            |             |        |        |        |        |        |        |        |        | (X1) CARICO (CHARGE) (F1:Fi) | (C1) CARICO (CHARGE) (F2:Fi) |                       | C1                   | C2   | C3   |
| 111-1-D    | B 111 - ... | 850    | 650    | 200    | 100    | 1000   | 800    | 200    | 125    | 7:1                          | 3:1                          | 90°                   | 108                  | 134  | 152  |
| 111-2-D    | B 111 - ... | 1000   | 750    | 300    | 220    | 1200   | 1000   | 350    | 250    | 7:1                          | 3:1                          | 90°                   | 204                  | 230  | 254  |
| 111-3-D    | B 111 - ... | 2300   | 1250   | 560    | 400    | 2500   | 1350   | 740    | 530    | 8:1                          | 4:1                          | 90°                   | 300                  | 328  | 362  |
| 111-4-D    | B 111 - ... | 3500   | 1800   | 900    | 700    | 3650   | 2000   | 1035   | 800    | 9:1                          | 4:1                          | 90°                   | 720                  | 782  | 847  |
| 111-5-D    | B 111 - ... | 4500   | 2000   | 1250   | 1000   | 5000   | 2125   | 1350   | 1080   | 10:1                         | 5:1                          | 90°                   | 1378                 | 1480 | 1580 |

F1 - F2 - F3 - F4 : FORZA DI ESERCIZIO (FORCE EXERCICE), F5 - F6 - F7 - F8 : CAPACITA' DI TENUTA (CAPACITE DE MAINTIEN), Fi : FORZA APPLICATA (FORCE APPLIQUEE)

111-D

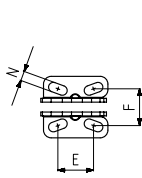
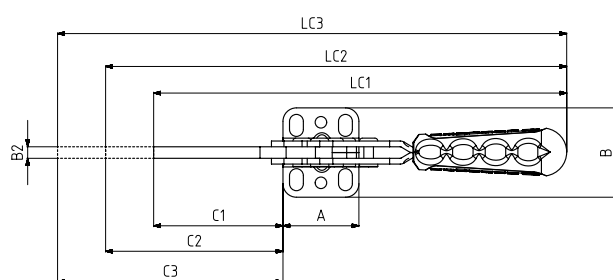


\*911-951-G (pagina 120-123)  
Vedere Pagina Accessori  
\*911-951-G (page 120-123)  
Voir Pages Accessoires

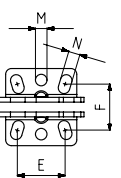
**Base Orizzontale**  
Base de Montage Horizontale



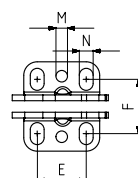
111-D-L Pagina/Page: 12    211-D Pagina/Page: 18    211 Pagina/Page: 17



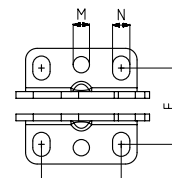
MODELLO NR (N° MODELE) : 111-1-D



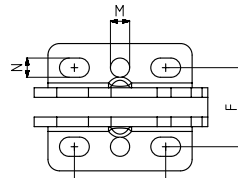
MODELLO NR (N° MODELE) : 111-2-D



MODELLO NR (N° MODELE) : 111-3-D



MODELLO NR (N° MODELE) : 111-4-D



MODELLO NR (N° MODELE) : 111-5-D



| MODELLO NR | A    | B    | B2 | C1  | C2  | C3  | E    | F    | G  | H   | H2  | J    | LC1 | LC2 | LC3 | M     | N         | X1 |
|------------|------|------|----|-----|-----|-----|------|------|----|-----|-----|------|-----|-----|-----|-------|-----------|----|
| 111-1-D    | 33,5 | 32   | 5  | 43  | 93  | 143 | 18,5 | 19   | 21 | 40  | 95  | 10   | 148 | 198 | 248 |       | 5 x 10    | 15 |
| 111-2-D    | 37   | 40   | 5  | 66  | 116 | 166 | 25   | 24   | 28 | 51  | 110 | 14   | 184 | 234 | 284 | Ø 6   | 6 x 10    | 19 |
| 111-3-D    | 39,5 | 46,5 | 6  | 68  | 118 | 168 | 25,5 | 28,5 | 34 | 61  | 136 | 14   | 215 | 265 | 315 | Ø 6   | 7 x 11,5  | 25 |
| 111-4-D    | 58   | 60   | 8  | 100 | 150 | 200 | 41,5 | 39,5 | 45 | 82  | 175 | 19   | 296 | 346 | 396 | Ø 8,5 | 9 x 12,5  | 27 |
| 111-5-D    | 75   | 66   | 10 | 129 | 179 | 229 | 47,5 | 42   | 55 | 104 | 218 | 25,5 | 345 | 395 | 445 | Ø 10  | 10 x 15,5 | 37 |